



Winter 2012



The South Washington Watershed District

The District is located entirely in Washington County and contains portions of ten cities and townships: Afton, Cottage Grove, Denmark Township, Grey Cloud Island Township, Hastings, Lake Elmo, Newport, Oakdale, St. Paul Park and Woodbury.



2012 Clean Water Cost Share Program

The South Washington Watershed District (SWWD) is launching its 2012 Water Quality Cost Share Program to encourage SWWD residents to use innovative practices that help keep local lakes and rivers clean and healthy.

All interested landowners are eligible for a free site visit and design consultation. SWWD staff will work with you to develop a concept plan that maximizes benefit to local lakes and rivers and submit all necessary documentation to apply for cost share funding. Prior to completing your application, staff will provide an estimate of the water quality benefits provided by your project, which will determine the level of funding you are eligible for.

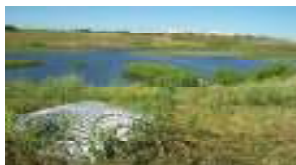
The Water Quality Cost Share Program is a reimbursement program.

Participants must be approved prior to the start of their project in order to receive funding. Reimbursement is provided upon project completion and is based on anticipated water quality benefits to District lakes and streams.

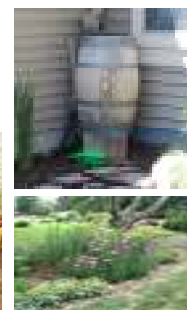
To learn more about the SWWD Cost Share Program or schedule a site visit, please visit www.swwdmn.org or contact John Loomis at

jlloomis@ci.woodbury.mn.us or (651) 714-3714.

To find sample garden plans, plant information and local nurseries and landscapers, please visit www.BlueThumb.org.



Rain gardens, rain barrels, and native plantings are examples of eligible cost share projects.



SWWD Project Updates

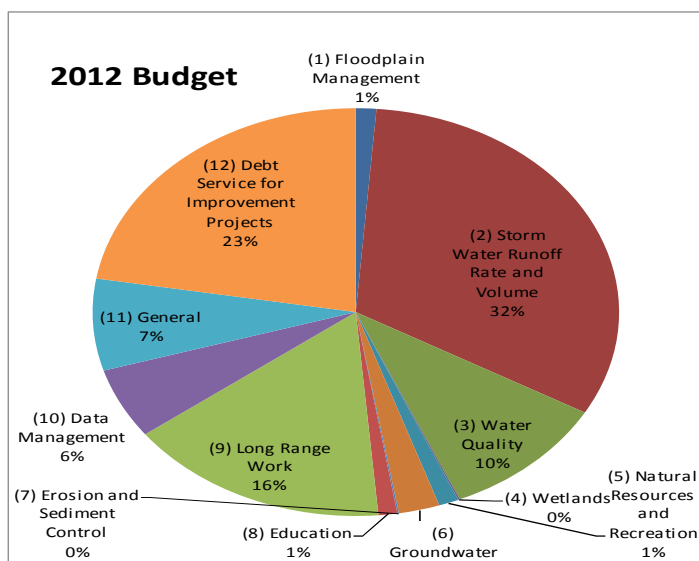
Major projects for 2012 include 3 projects in the East Mississippi management unit, including ravine stabilization, stormwater control structures, and water quality/habitat improvements. These three projects are in various stages of construction design and planning. Ravine stabilization in Newport includes, ponding, stormsewer, channel stabilization and water quality improvements. The project will also include local flood damage reduction to alleviate local drainage issues. The Clear Channel Pond project will provide water quality improvements and flood control along highway 61 and between Cottage Grove and St. Paul Park. The Grey Cloud Island project will restore flow to the Mississippi River backwaters around Grey Cloud Island to improve water quality and habitat.

In the South Washington management unit design is beginning on the watershed overflow. This project has been in the planning stage for nearly 20 years. This project will be partnered with Washington County and the City of Cottage Grove and carry excess stormwater runoff from the northern watershed to the Mississippi River. Total project cost is estimated at \$20 million. Other projects will include Cottage Grove Central Ravine improvements, CSAH 19 upgrades, and City street reconstruction projects.

2012 will be the first year of implementation for the Lower St. Croix management unit since the boundary expansion in 2010. The SWWD is working with the Washington Conservation District to reduce phosphorus loading to Lake St. Croix as part of the States Total Maximum Daily Load (TMDL) for the St. Croix River. Several sites have been identified to implement best management practices in the form of grassed waterways, sediment basins, pond retrofits and bioretention areas.

2012 Annual Work Plan and Budget

The District Board annually prioritizes work activities from the long range work plan constituting targeted efforts for the coming year. These work activities translate into the annual work plan and budget for the SWWD. The annual work plan allows the District Board to establish a short term operating budget while maintaining connection to the overall long term management goals of the District. Ten Management areas have been defined through which the SWWD will work to execute the annual work plan. The areas are: (1) Floodplain Management, (2) Stormwater Runoff Rate and Volume, (3) Water Quality, (4) Wetlands, (5) Natural Resources and Recreation, (6) Groundwater, (7) Erosion and Sediment Control, (8) Education, (9) Long Range Work Plan and Financing, (10) Data Management, a General Fund, and a Debt Service Fund. According to Minnesota Statute 103D.911 the SWWD must hold a hearing and adopt a preliminary budget on or before September 15th of each year. The Final budget certification is due to Washington County by December 31st of each year.



Management Area	2012 Budget
(1) Floodplain Management	\$43,650.00
(2) Storm Water Runoff	\$1,110,650.00
(3) Water Quality	\$359,200.00
(4) Wetlands	\$3,200.00
(5) Natural Resources and Recreation	\$42,800.00
(6) Groundwater	\$87,400.00
(7) Erosion and Sediment Control	\$3,200.00
(8) Education	\$40,300.00
(9) Long Range Work Planning	\$560,505.00
(10) Data Management	\$194,686.70
(11) General	\$253,357.00
(12) Debt Service for Improvement Projects	\$777,000.00
Total	\$3,475,948.70

Administrator's Corner By Matt Moore, SWWD Administrator

In November 2008 the citizens of Minnesota approved the Clean Water Legacy Constitutional Amendment. This year the SWWD was awarded two Clean Water Legacy grants. The SWWD will be working on water quality improvements in the Trout Brook watershed. Much of this work will include streambank stabilization, sediment reduction and nutrient reductions. The second grant will focus on water quality improvements in the Colby Lake sub-watershed. This grant will supplement the City of Woodbury's work to improve water quality during the street reconstruction project. The SWWD was able to leverage local revenue to receive State funding and accelerate implementation of water quality projects. The goal of these projects is to reduce phosphorus loading and improve water quality. In the Trout Brook watershed the SWWD is attempting to meet the reduction requirements of the States Total Maximum Daily Load study for Lake St. Croix. Load reductions to Colby Lake are being done ahead of further regulation from the State to achieve water quality goals. SWWD is focusing on load reductions from targeted locations to achieve the most benefit for the receiving water. For more information visit <http://www.legacy.leg.mn/>



We're on the Web!
<http://www.swwdmn.org>.



There are 3 **free** workshops offered this spring to teach you about raingardens, native plantings, and shoreline stabilization.

Blue Thumb – Planting for Clean Water Workshops

- Tuesday February 28th 6-8pm, All Saints Lutheran Church (8100 Belden Blvd Cottage Grove, MN 55016)
- Tuesday March 13th 6-8pm, Gander Mountain (14640 W. Freeway Drive Forest Lake, MN 55025).
- Thursday April 12th 7-8:30pm, Afton City Hall (3033 St. Croix Trail, Afton, MN)

All workshops require R.S.V.P.
email: wendy.griffin@mnwcd.org or
phone: 651-275-1136 ext. 24. Regis-